

Funding Invasive Plant Projects Through the Farm Bill

2004 Cal-IPC Symposium

John Warner, NRCS

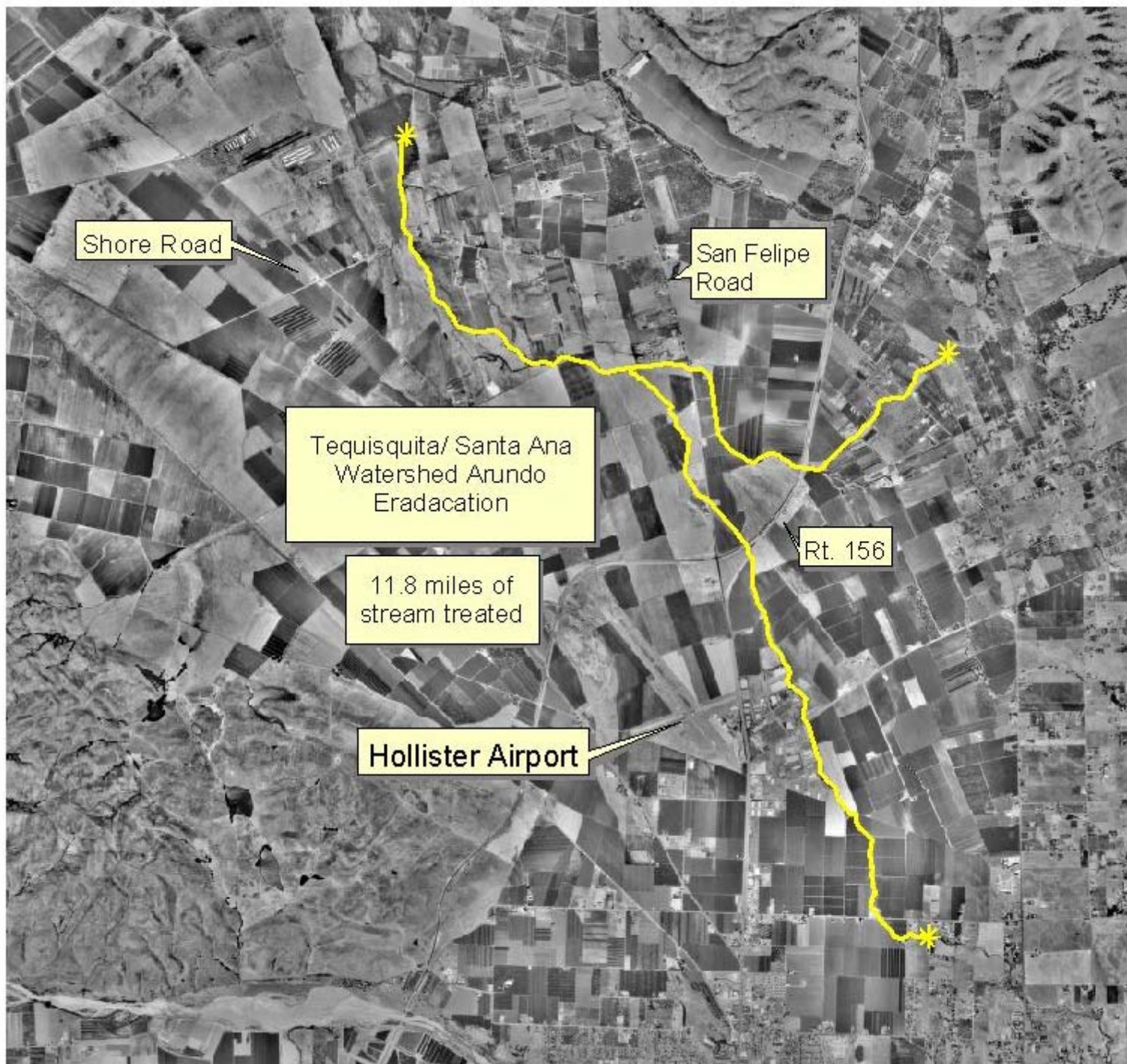
October 8, 2004





2. 10. 2004





Shore Road

San Felipe Road

Tequisquita/ Santa Ana Watershed Arundo Eradication

11.8 miles of stream treated

Rt. 156

Hollister Airport

Conservation Provisions of the Farm Security and Rural Investment Act of 2002

- Environmental Quality Incentives Program
\$832,100,000
- Wetlands Reserve Program \$275,200,000
- Wildlife Habitat Incentives Program
\$33,300,000

Fiscal Year 2004

USDA News Release 1/28/04

All NRCS Programs

- Voluntary participation
- Focus on private lands
- Non-regulatory
- Confidentiality of case file data

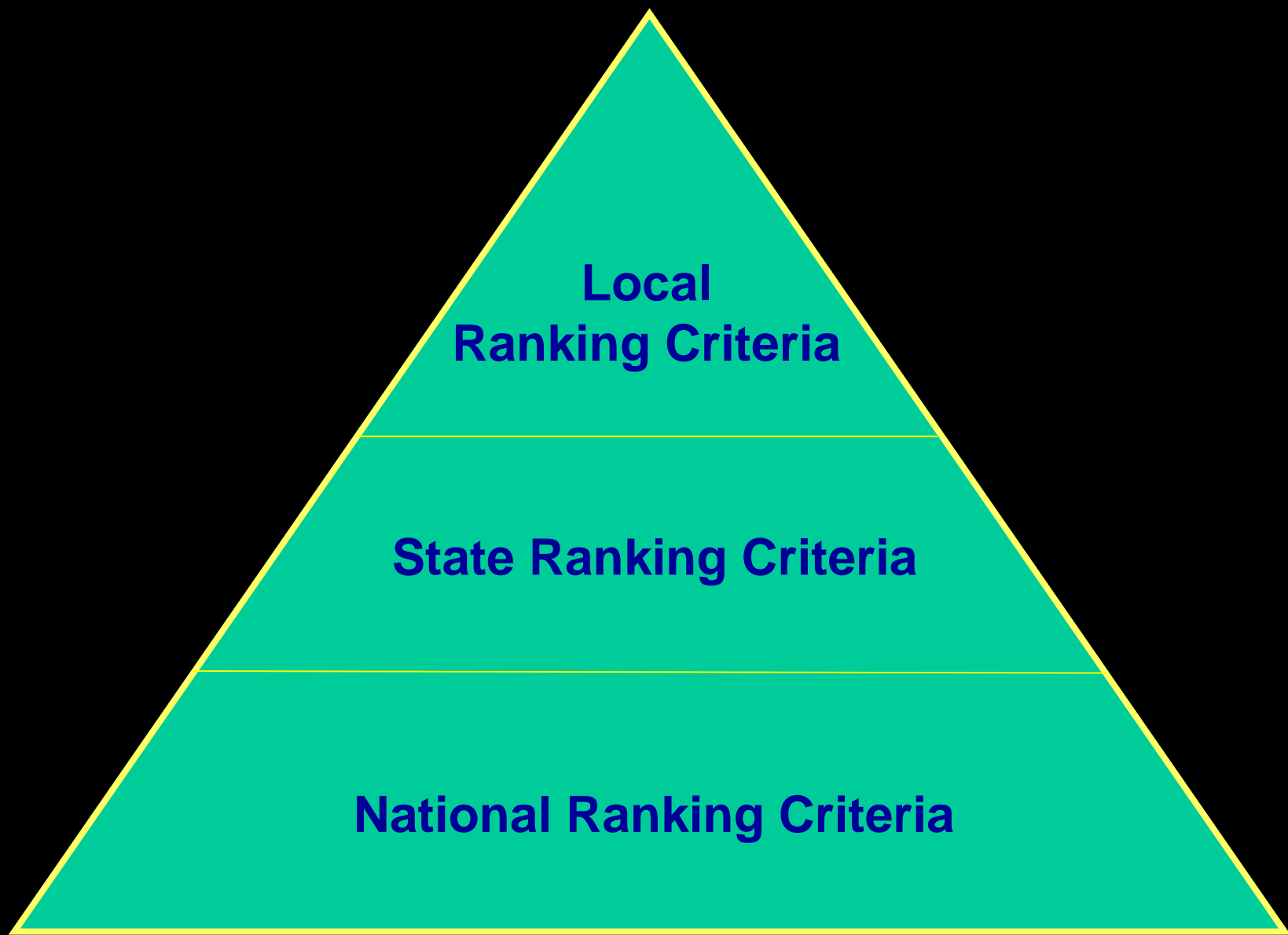


Environmental Quality Incentives Program (EQIP)

- Help farmers and ranchers reduce soil erosion, improve water quality & quantity and protect grazing land.
- Provides technical and financial assistance
- Calif received \$57 million for Fiscal Year 2004

Eligibility Requirements

- Must be an agricultural producer
- Must have control of the land for life of project
- \$2.5 million adjusted gross income limit



**Local
Ranking Criteria**

State Ranking Criteria

National Ranking Criteria

Sunflower Family (Asteraceae)



Yellow starthistle (*Centaurea solstitialis*)

Search

California

Enter Keywords

GO

Programs

[Environmental Quality Initiative](#)[Watershed Protection Initiative](#)[Emergency Watershed](#)[Protection Program](#)[\(EWP\)](#)[Environmental Quality](#)[Incentives Program](#)[\(EQIP\)](#)[Farm Bill](#)[Farm & Ranchland](#)[Protection Program](#)[Classland Reserve](#)[Program](#)[Additional Resources](#)[Inventory \(NRI\) - CA](#)[Hazardous Materials Center](#)[Small Watershed](#)[Program](#)[Snow Survey Program](#)[Soil Survey Program](#)[State Technical](#)[Advisory Committee](#)

California Environmental Quality Incentives Program (EQIP)

The Environmental Quality Incentives Program (EQIP) was established in the 1996 Farm Bill to provide a single, voluntary conservation program for farmers and ranchers to address significant natural resource concerns. Nationally, it provides technical, financial, and educational assistance primarily in designated priority areas to address natural resource concerns. The 2002 Farm Bill made significant changes to the EQIP Program. Please check back often to this web site and the NRCS National web site for current information.


[California 2003 State EQIP Information - For Archival Purposes Only](#)

[California 2004 State EQIP Sign-Up and Application Information - New!](#)

Fact Sheets & General Information

- [Current EQIP Program Fact Sheets](#)
- [NRCS EQIP National Program Information](#)
- [NRCS Program Appeal Information](#)
- [Freedom of Information Act \(FOIA\)](#)

California EQIP Program, Contract, and Practice Data Reports

The following documents require  [Adobe Acrobat](#).

[Fiscal Year 2002](#) (5.6 MB)

[Fiscal Year 2001](#) (4.3 MB)

[Fiscal Year 2000](#) (2.4 MB)

[Fiscal Year 1999](#) (2.0 MB)

Programs

[Water Quality Initiative](#)
[Conservation Tillage Initiative](#)
[Emergency Watershed Protection Program \(EWPP\)](#)
[Environmental Quality Incentives Program \(EQIP\)](#)
[Farm Bill](#)
[Farm & Ranchland Protection Program](#)
[Grassland Reserve Program](#)
[National Resources Inventory \(NRI\) - CA](#)
[Plant Materials Center](#)
[Small Watershed Program](#)
[Soil Survey Program](#)
[State Technical Advisory Committee](#)

[Find a Service Center](#)

Environmental Quality Incentives Program Application Information for Fiscal Year 2004

The Environmental Quality Incentives Program (EQIP) was established in the 1996 Farm Bill to provide a single, voluntary conservation program for farmers and ranchers to address significant natural resource concerns. Nationally, it provides technical and financial assistance to address natural resource concerns. Administered by the Natural Resources Conservation Service (NRCS), EQIP was reauthorized in the [2002 Farm Bill](#) and awards cost share assistance to projects which provide significant environmental benefit. Eligible farmers and ranchers may apply for EQIP program benefits at any time. Application ranking periods are established to allow evaluation of projects and awarding of contracts based upon an environmental score for each application that achieves the natural resource benefits identified by local, state and national priorities. Practices eligible for cost share and the environmental score is calculated based upon ranking criteria developed with input from Local Work Groups (LWG) and the [State Technical Advisory Committee \(STAC\)](#). To be considered for fiscal year 2004 EQIP program benefits, producers must have submitted an application and required eligibility documentation to their [local NRCS office](#) no later than close of business on January 30, 2004. Contact your local NRCS office as soon as possible as some NRCS Designated Conservationists may have established an application deadline earlier than January 30, 2004.

Environmental Quality Incentives Program



NRCS Photo

Eligibility

Eligible producers engaged in livestock or crop production on eligible land may apply for EQIP program benefits. Eligible land includes cropland; rangeland; grassland; pastureland; private non-industrial forestland; and other farm or ranchlands as determined by the Secretary of Agriculture. Submittal of all applications, determination of eligibility and project evaluation is completed at the [local NRCS](#) level.

2004 EQIP Program Information

- [California Statewide EQIP Program Priorities, Ranking Information and Statewide Cost Lists](#)
- [California EQIP Funding Allocation](#)
- [California County EQIP Program and Application Information - New!](#)
- [NRCS National EQIP Program](#)

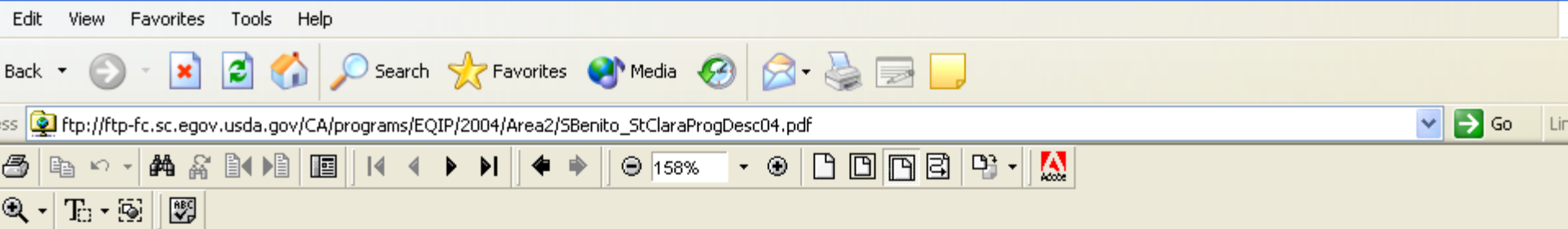
- Water Quality
- Environmental Quality
- Centives Program
- QIP)
- Farm Bill
- Farm & Ranchland
- Protection Program
- Grassland Reserve
- Program
- National Resources
- Inventory (NRI) - CA
- Plant Materials Center
- Small Watershed
- Program
- Flow Survey Program
- Soil Survey Program
- State Technical
- Advisory Committee
- and a Service Center

Locate your county on the map below to find the practices available for cost-share and download the Excel spreadsheet that NRCS offices use to evaluate EQIP applications and determine the amount of money that can be cost-shared.



Map of California by County

San Benito	2	EQIP Program Description (258 KB) Local Ranking Criteria
San Bernardino	4	Mojave Desert EQIP Program Description Mojave Desert Local Cost Share List Chino Basin EQIP Program Description Chino Basin Local Ranking Criteria (139 KB)
San Diego	4	EQIP Program Description Local Practice Cost Share List (267 KB)
San Luis Obispo	2	EQIP Program Description (474 KB) Local Ranking Criteria Local Cost Share List
Santa Barbara	2	EQIP Program Description (473 KB)
Santa Clara	2	EQIP Program Description (175 KB) Local Ranking Criteria
Santa Cruz	2	EQIP Program Description (159 KB) Local Ranking Criteria (144 KB) Local Approved Practice Cost Share List (175 KB)
Stanislaus	2	EQIP Program Description (182 KB) Confined Animal Feeding Operation Ranking Criteria Cropland Ranking Criteria Rangeland Resource Concern Ranking Criteria
Tulare	3	EQIP Program Description



Environmental Quality Incentives Program (Fiscal Year 2004)

State of California - County Program Description for San Benito and Santa Clara Counties
Watersheds - All watersheds

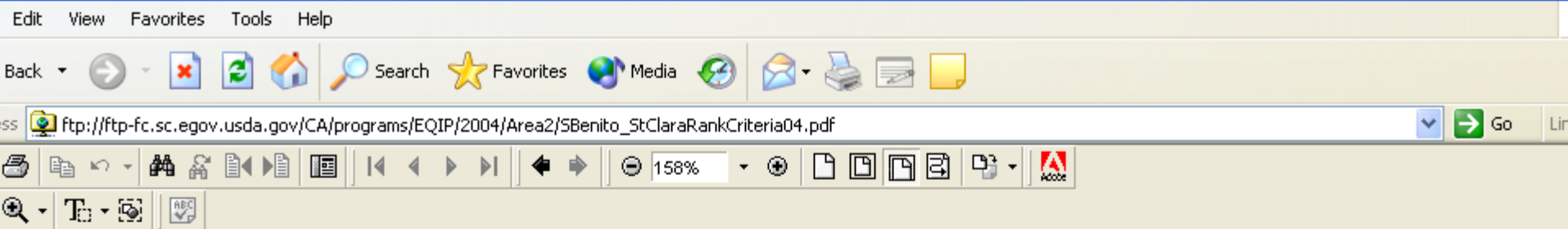
Administrative Office/Contact: USDA-Natural Resources Conservation Service
2337 Technology Parkway, Suite C
Hollister, CA 95023
(831) 637-4360

Introduction

San Benito County and Santa Clara County are located in the interior coastal mountains and valleys of central California. San Benito County covers 889,020 acres and Santa Clara County covers 826,050 acres. Combined irrigated land is about 55,000 acres and combined grazing land is about 986,000 acres. Irrigated cropland is in the Santa Clara Basin, which drains to the San Francisco Bay via Coyote Creek, and in the Santa Clara, San Juan and Hollister valleys which drain to the Monterey Bay via the Pajaro River. Irrigated agriculture is primarily built around vegetable crops and fruit and nut orchards. Irrigation water is obtained from local ground water basins and water imported through the San Felipe Division of the Central Valley Project. Grazed land is primarily confined to the mountains and isolated nonirrigated valleys in the Santa Cruz, Gabilan and Diablo Mountain ranges.

EQIP Program

Mr. Bruce Eisenman, Designated Conservationist for San Benito and Santa Clara Counties has taken into consideration the locally identified resource concerns identified by the Local Work Group and stakeholders. Funds allocated to the Hollister NRCS office will be initially divided equally between irrigated cropland and grazed land. Allocated funds not used in one of these



Environmental Quality Incentives Program (2004 EQIP) NRCS California Statewide Ranking Criteria Worksheet

Detailed Ranking Criteria Worksheet - Factor 3: Local Resource Concerns San Benito and Santa Clara Counties

Client Name:	Date:
--------------	-------

Instructions: With input from Local Work Groups (LWG) and stakeholders, the Designated Conservationist has developed the following ranking criteria to address local resource concerns. All FY2004 EQIP applications will be evaluated using the adopted State/National and locally developed ranking criteria (Factors 1, 2, & 3). The NRCS representative and client jointly complete the EQIP program ranking criteria worksheets. A maximum of 45 points may be earned in this section.

Local Resource Concern(s)		30 Points	25 Points	20 Points	15 Points	10 Points	5 Points
1	Yellow and Purple starthistle (YST/PST) control under a prescribed grazing treatment plan	25 acres or more of YST/PST to be treated.	20 to 24.9 acres of YST/PST to be treated	15 to 19.9 acres of YST/PST to be treated	10 to 14.9 acres of YST/PST to be treated	5 to 9.9 acres of YST/PST to be treated	1 to 4.9 acres of YST/PST to be treated
					15 Points		
	Yellow and Purple starthistle (YST/PST) control – community effort. Applies to the				Applicant has one or more neighbors participating		

<http://www.ca.nrcs.usda.gov/programs/eqip/>

Yellow Starthistle Control



Year 1. Practice 528A.

Prescribed Grazing.

Required burn or herbicide treatment.

\$35/acre.

Year 2. Practice 528A. Prescribed Grazing. \$10/acre.

Year 3. Practice 528A. Prescribed Grazing. \$10/acre.



5. 21. 2003



State Approved Cost Share List Fiscal Year 2004

Fence **State Approved Cost \$4 LF**

50% Cost Share

Not-to-exceed \$2 LF

Range **State Approved Cost \$1,000 acre**

Planting **50% Cost Share**

Not-to-exceed \$500 acre

Rancher Owned Equipment and Self Labor Not-to-Exceed Rates

Drawbar horsepower 90.0 to 129.9

Example: D-7

\$90.00 per hour (including the driver)

Hand labor

\$15.00 per hour

Materials on Hand

Fair market value

Wetlands Reserve Program (WRP)

- Provides technical and financial assistance to eligible landowners to address wetland, wildlife habitat, soil, water, and related natural resource concerns on private lands in an environmentally beneficial and cost-effective manner

Wildlife Habitat Incentives Program (WHIP)

- Offers opportunities to landowners to improve and protect wildlife habitat on private lands
- Provides cost-share payments under 5- to 10-year agreements for upland, wetland, riparian, and aquatic wildlife habitats
- Since 1998, nearly 11,000 landowners have enrolled more than 1.6 million acres, with an increasing emphasis on riparian and aquatic habitats.

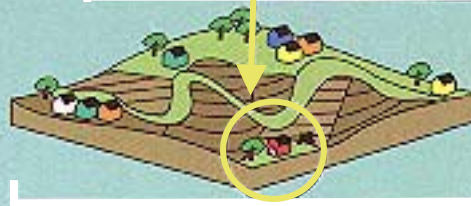
Conservation Planning

Individual



Site

Group



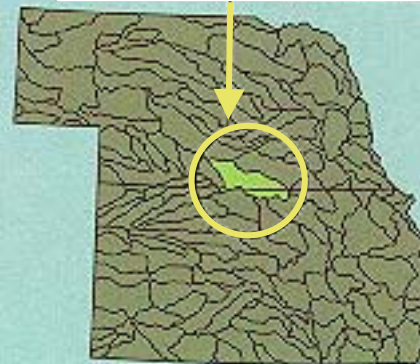
Reach

Areawide



Watershed

River Basin





<http://www.ca.nrcs.usda.gov/>