

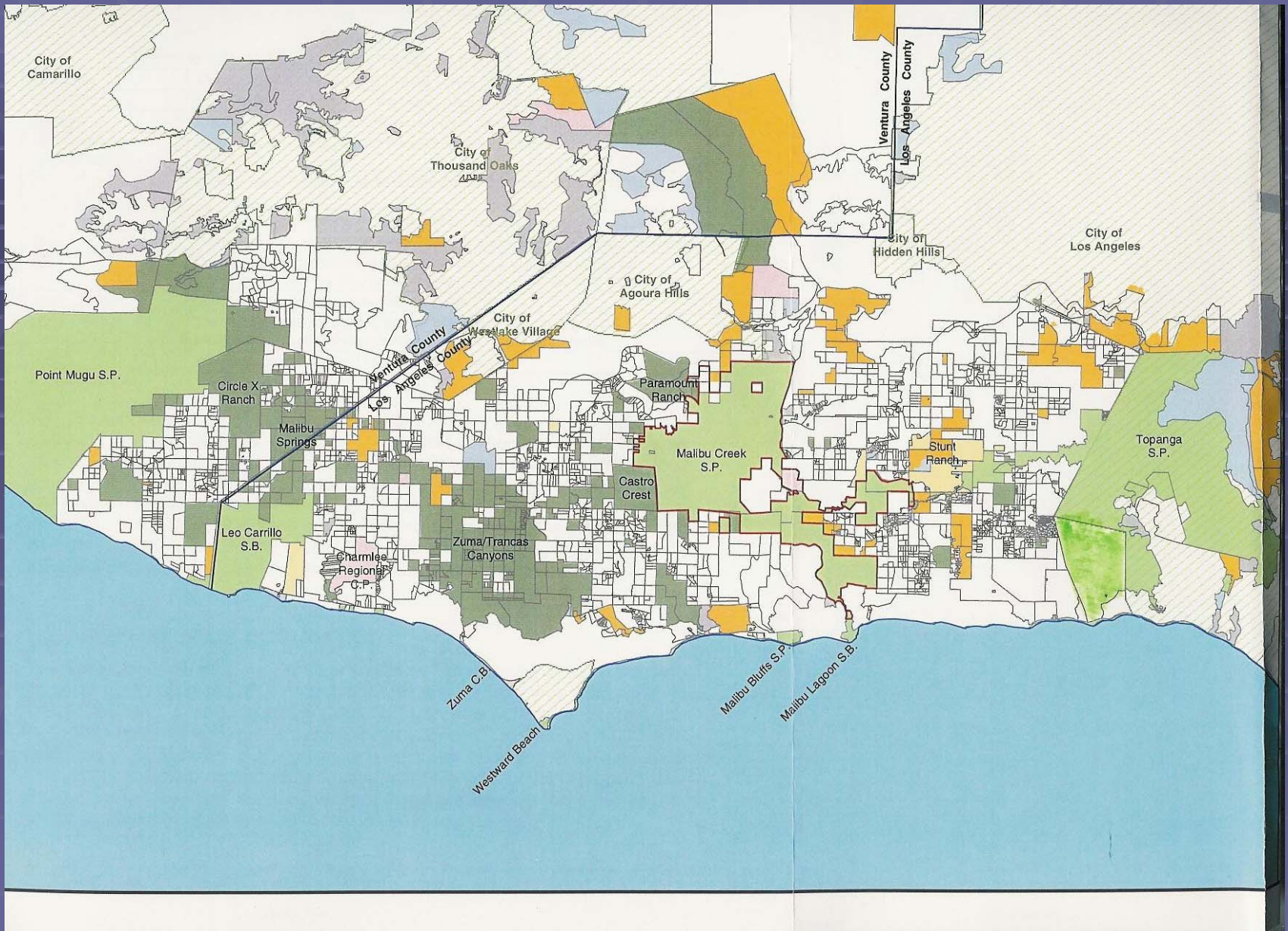
# Managing Remnants of Natural Habitat in an Urban Sea

Suzanne Goode

California Department of Parks  
and Recreation

# Santa Monica Mountains

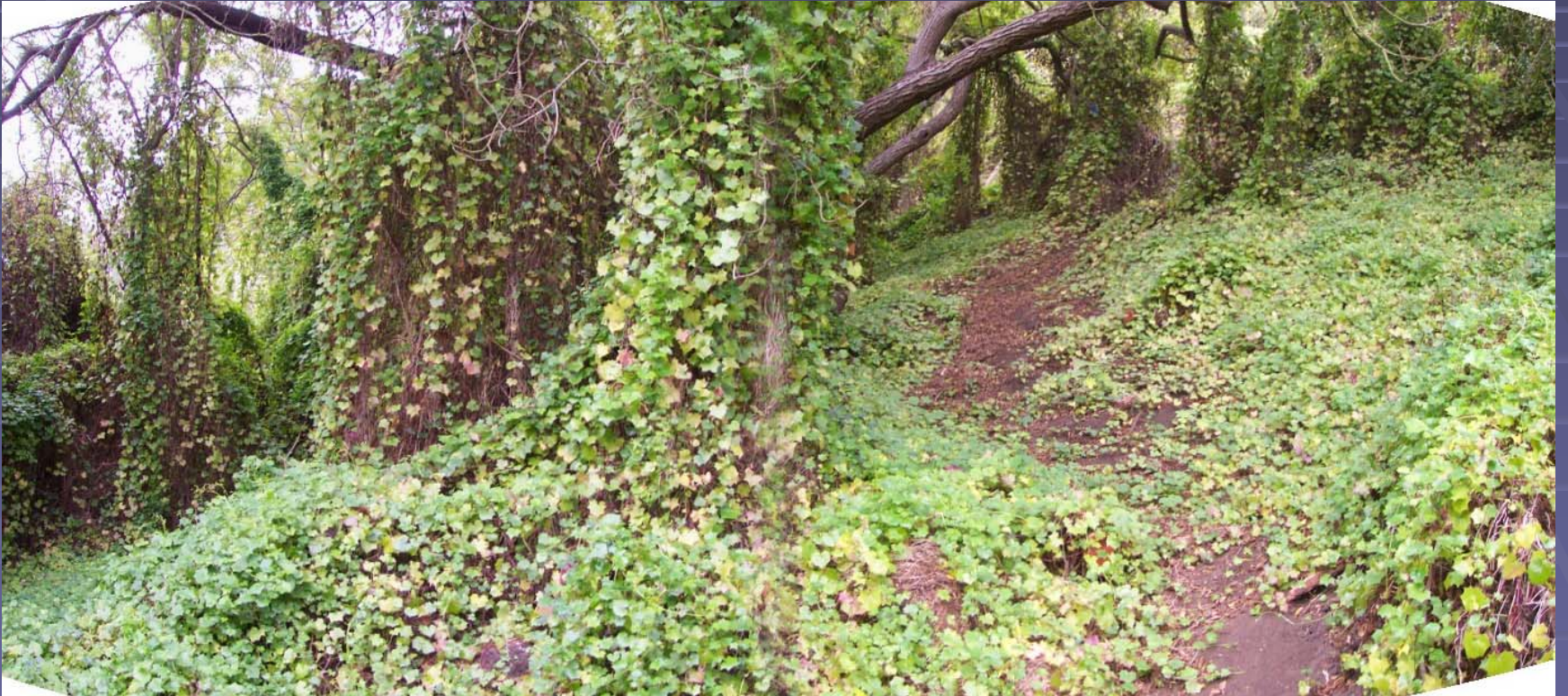




# Angeles Distict – 40,000 Acres

- Point Mugu SP
- Leo Carrillo SP
- Point Dume SB
- Robert Meyer SB
- Malibu Lagoon SB
- Malibu Creek SP
- Topanga SP
- Will Rogers SHP
- Los Encinos SHP
- Santa Susana Pass SHP
- Verdugo Mountains
- Kenneth Hahn SRA
- Cornfields
- Taylor Yard
- Pio Pico SHP

# Cape Ivy – Topanga S. P.



# Harding Grass – Point Mugu S. P.



# Ice Plant – Point Dume S. B.



# And many others...

- Tree of Heaven
- Eucalyptus
- Myoporum
- Arundo
- Pampas Grass
- Perennial Pepperweed
- Euphorbia
- Fennel
- Castor Bean
- Yellow Star Thistle
- Milk Thistle
- Artichoke Thistle
- Italian Thistle
- Bull Thistle
- Vinca
- Horehound
- Mustard
- Annual Grasses



# Urban Interface

- Escaped Ornamentals
- Landslide Stockpiles
- Dumping
- Fuel Modification Treatments
- Trails

# Escaped Ornamentals









# Landslide Stockpiles





# Dumping





# Fuel Modification





# Trails



# Volunteer Efforts



# Volunteer Efforts

- California Native Plant Society
- Heal the Bay
- Audubon Society
- Surfrider Foundation
- Topanga Stream Team
- Topanga Community
- Various Service Projects

# DPR Funding Sources

- Natural Heritage Stewardship Program
- Natural Resource Management Program
- Deferred Maintenance Program
- Category 1-H Resource Maintenance Program

# Natural Heritage Stewardship Program

- Bond-funded
- Large Projects: 2-5 Years
- Usually > \$20K
- Phased
- Goal: Bring to Maintenance Level

# Natural Resource Management Program

- General Fund
- Small Projects
- Complete in One Year
- Usually < \$20K



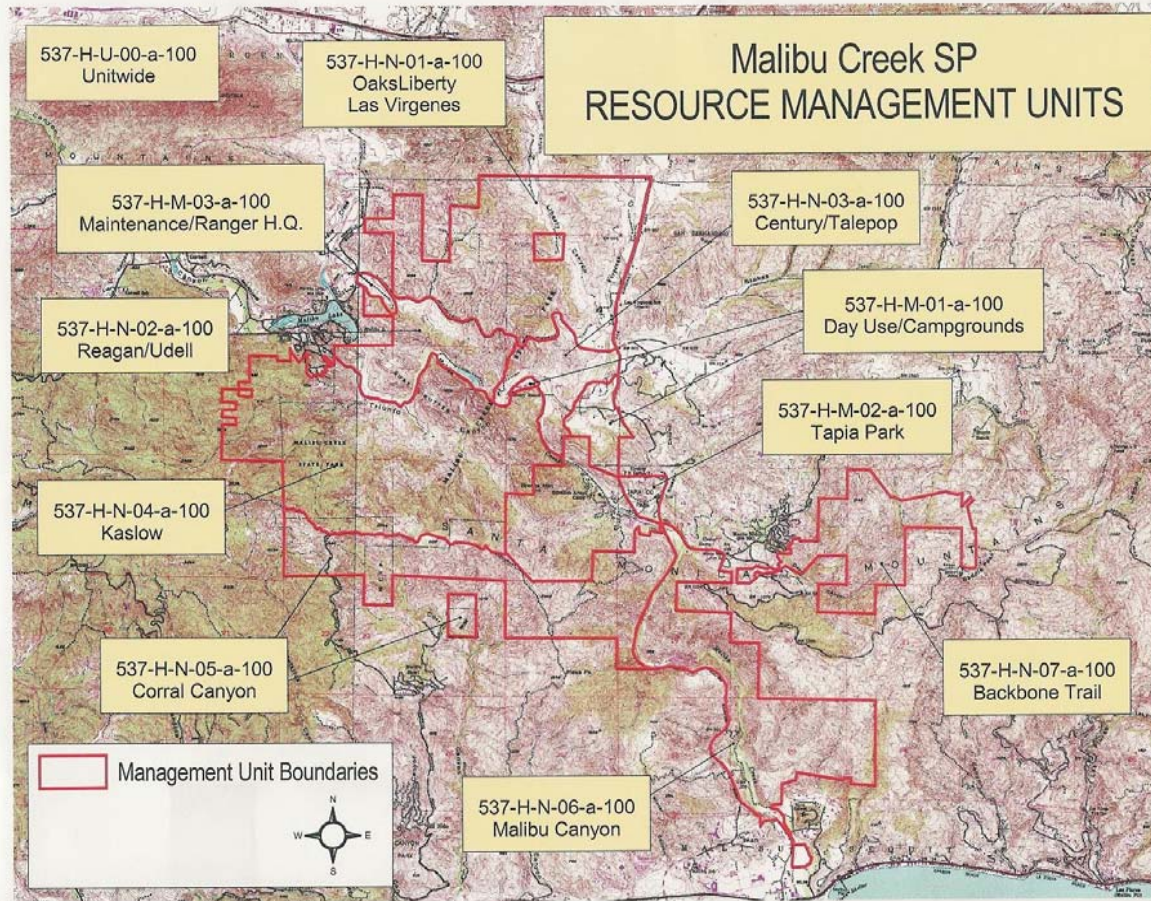
# Natural Deferred Maintenance Program

- One time only infusion of funds
- \$157 Million for Facilities, Natural and Cultural Resources
- Projects on Project Infrastructure Database

# Category 1H Resource Maintenance Program

- Created by Resource Ecologists
- \$17 Million Need
- \$11 Million Award
- Reduced to \$2 Million Statewide
- Angeles District - \$86,700/year
- Modeled on Facilities Maintenance Program
- Divide Parks into Management Units
- Annual Inspections
- Work Order Creation
- Prioritization
- Work Order Tracking

# Management Units



# Work Order Prioritization



California State Parks - Natural Resource Maintenance

On-Going Maintenance Program  
**WORK LIST RANKED BY - STARTDATE**

Activity :All

For Park Unit(s) :537

Starting Between 11-01-04 and 04-30-05

Priority	Start Date	Activity	Management Unit	Work Order	Description	Assigned To
3	11-01-2004	57	537-H-N-02-a-100	0000021577	MANAGEMENT UNIT INSPECTION, ANNUAL	
3	11-15-2004	11	537-H-N-02-a-100	0000022941	VEGETATION SUCCESSION, ANNUAL GRASSLAND	
3	02-01-2005	15	537-H-N-02-a-100	0000008988	EXOTIC PLANT, EXISTING, HARDING GRASS, 1YR	
3	03-01-2005	15	537-H-N-02-a-100	0000008982	EXOTIC PLANT, EXISTING, MILK THISTLE, 1YR	
3	03-01-2005	15	537-H-N-02-a-100	0000019922	EXOTIC PLANT, NEW, INCIDENTAL AND UNCOMMON, 1YR	
2	03-01-2005	15	537-H-N-02-a-100	0000008987	EXOTIC PLANT, EXISTING, BULL THISTLE, 1YR	
2	03-15-2005	15	537-H-N-02-a-100	0000008981	EXOTIC PLANT, EXISTING, CASTOR BEAN, 1YR	
3	04-04-2005	15	537-H-N-02-A-100	0000008978	EXOTIC PLANT, EXISTING, YELLOW STARHISTLE, 1YR	

# Cape Ivy – Topanga S. P.





















# Harding Grass – Point Mugu S.P.















# Ice Plant – Point Dume S. B.























# Arundo – Topanga S. P.





















