

Sacramento WMA 2010 Strategic Plan Appendices

Appendix A. Sacramento County Active Weed Projects and Priority Weeds, December 2008

Appendix B. Weed Distribution Information Gathered for Sacramento County

Appendix C. Invasive Plants Occurring in Sacramento County Ranked as HIGH by Cal-IPC

Appendix D. Sacramento WMA Regional Meeting Summary and List of Attendees

Appendix E. Mines in Sacramento County Based on 2006 Department of Mines and Geology Database Request

Appendix F. Inspection Procedures for Prevention of New Weed Introductions Into Sacramento County

Appendix G. Detailed Results from WMA Prioritization Meeting on August 13, 2009

Appendix A. Sacramento County Active Weed Projects and Priority Weeds, December 2008

Scientific Name	WMA Brochure (2003?)	Natomas ¹	Dry/Robla Creeks	Arcade Ck ²	American River Pkwy ³	Laguna Ck	Stone Lakes ⁴	Cosumnes Preserve (2001)	Sac Open Space ⁵	State Parks	Cal-IPC Rank ⁶
<i>Acacia sp.</i>				X							VAR
<i>Ailanthus altissima</i>	X	X		X				X		X	MOD
<i>Ammi visnaga</i>									X		--
<i>Arundo donax</i>	X		X	X	X		X	X		X	HIGH
<i>Bambusa sp.</i>				X						X	--
<i>Briza maxima</i>									X		--
<i>Carduus pycnocephalus</i>		X							X	X	MOD
<i>Catalpa bignonioides</i>		X	X	X							NNR
<i>Centaurea calcitrapa</i>	X							X			MOD
<i>Centaurea solstitialis</i>	X	X				X	X	X	X	X	HIGH
<i>Centaurea sulphurea</i>	X										--
<i>Chondrilla juncea</i>	X								X		MOD
<i>Cirsium vulgare</i>		X				X					MOD
<i>Conium maculatum</i>		X								X	MOD
<i>Convolvulus arvensis</i>						X					ENL
<i>Cortaderia selloana</i>	X	X		X	X	X				X	HIGH
<i>Cuscuta japonica</i>											--
<i>Cynara cardunculus</i>	X										MOD
<i>Cytisus scoparius</i>	X			X						X	HIGH

Appendix A. Sacramento County Active Weed Projects and Priority Weeds, December 2008

Scientific Name	WMA Brochure (2003?)	Natomas ¹	Dry/Robla Creeks	Arcade Ck ²	American River Pkwy ³	Laguna Ck	Stone Lakes ⁴	Cosumnes Preserve (2001)	Sac Open Space ⁵	State Parks	Cal-IPC Rank ⁶
<i>Dittrichia graveolens</i>									X		MOD*
<i>Eichornia crassipes</i>	X					X	X	X			HIGH*
<i>Eucalyptus sp.</i>			X (Dry Ck)	X							VAR
<i>Ficus carica</i>		X		X	X			X			MOD
<i>Foeniculum vulgare</i>		X				X		X		X	HIGH
<i>Genista monspessulana</i>					X					X	HIGH
<i>Gleditsia tricanthos</i>								X			ENL
<i>Glyceria declinata</i>									X		MOD
<i>Hedera helix</i>		X		X						X	HIGH
<i>Hydrilla verticillata</i>	X										HIGH*
<i>Lepidium latifolium</i>	X	X					X	X			HIGH
<i>Ligustrum spp.</i>				X		X					ENL
<i>Ludwigia spp.</i>	X	X?	X			X	X				HIGH
<i>Lythrum salicaria</i>	X										HIGH
<i>Maclura pomifera</i>								X			--
<i>Mentha pulegium</i>		X							X		MOD
<i>Morus alba</i>				X				X			--
<i>Nerium oleander</i>					X						ENL
<i>Parentucellia viscosa</i>									X		LIM

Appendix A. Sacramento County Active Weed Projects and Priority Weeds, December 2008

Scientific Name	WMA Brochure (2003?)	Natomas ¹	Dry/Robla Creeks	Arcade Ck ²	American River Pkwy ³	Laguna Ck	Stone Lakes ⁴	Cosumnes Preserve (2001)	Sac Open Space ⁵	State Parks	Cal-IPC Rank ⁶
<i>Phalaris aquatica</i>		X								X	MOD
<i>Pyracantha sp.</i>				X	X						LIM
<i>Robinia pseudoacacia</i>				X				X			LIM
<i>Rubus (armeniacus) discolor</i>		X	X	X		X		X			HIGH
<i>Sapium sebiferum</i>	X		X (Dry Ck)		X	X		X			MOD*
<i>Sesbania punicea</i>			X	X	X			X		X	HIGH*
<i>Silybum marianum</i>						X					LIM
<i>Spartium junceum</i>	X			X	X					X	HIGH
<i>Taeniatherum caput-medusae</i>	X						X		X		HIGH
<i>Tamarisk sp.</i>	X			X	X	X					HIGH - VAR
<i>Tribulus terrestris</i>	X										--
<i>Ulmus sp.</i>				X				X			ENL - VAR
<i>Vinca major</i>				X						X	MOD

1. Table 2-6 in Biological Effectiveness Monitoring for the Natomas Basin Habitat Conservation Plan Area 2007 Annual Survey Results. April 2008.
2. Table 4-2 in Existing Conditions and Assessment Report and Stream Corridor Management Plan for the Arcade Creek Watershed, Sacramento County, California. Aug 2008.
3. American River Parkway list based on 10 top target weeds provided by Mary Maret. Many other weeds are present but not under active management.
4. Phone conversation 10/14 with Amy Hopperstad.
5. Phone conversation 10/14 with Carol Witham.

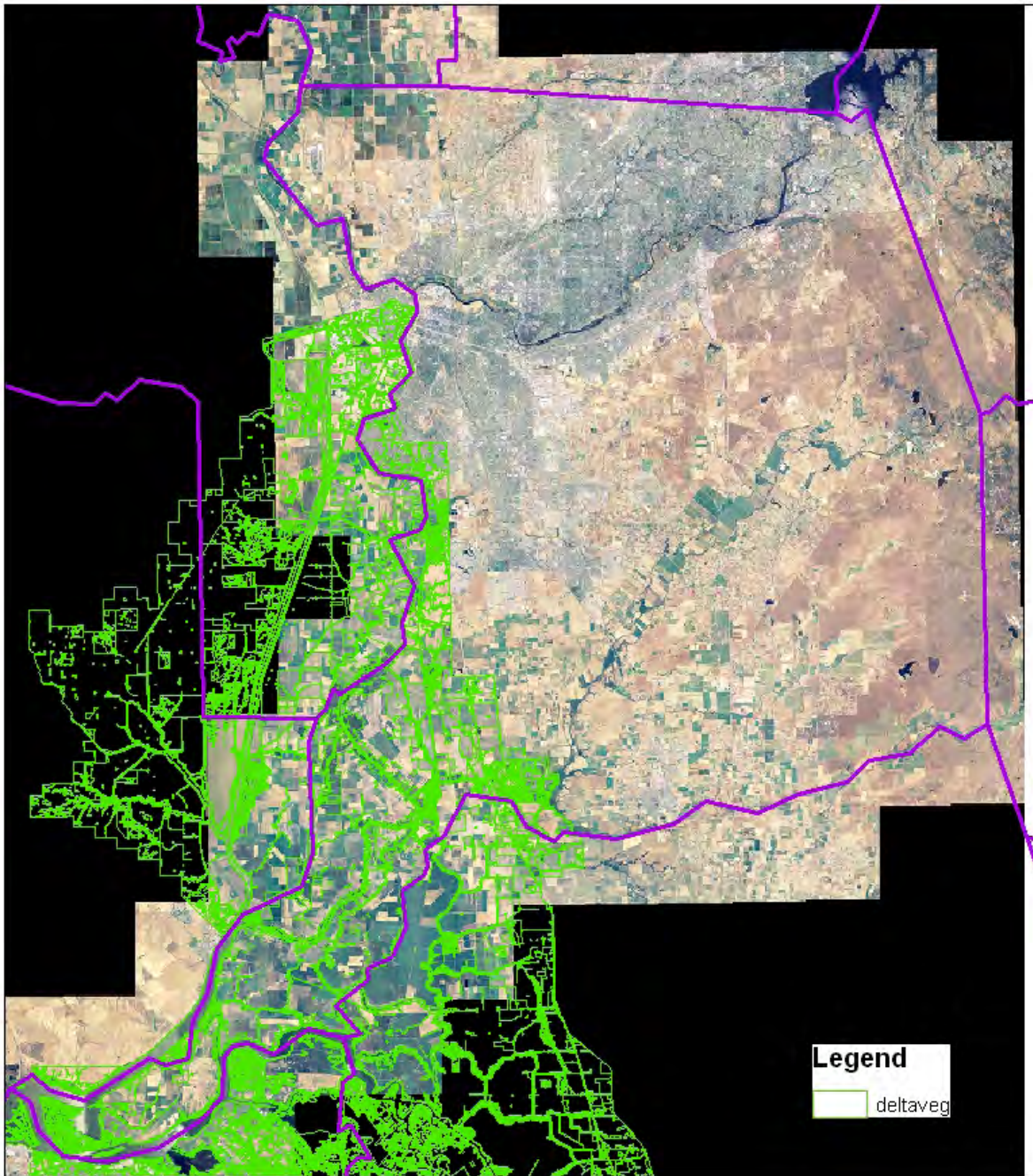
Appendix A. Sacramento County Active Weed Projects and Priority Weeds, December 2008

Scientific Name	WMA Brochure (2003?)	Natomas ¹	Dry/Robla Creeks	Arcade Ck ²	American River Pkwy ³	Laguna Ck	Stone Lakes ⁴	Cosumnes Preserve (2001)	Sac Open Space ⁵	State Parks	Cal-IPC Rank ⁶
6. Definitions from California Invasive Plant Inventory (2006)											
High – These species have severe ecological impacts on physical processes, plant and animal communities, and vegetation structure. Their reproductive biology and other attributes are conducive to moderate to high rates of dispersal and establishment. Most are widely distributed ecologically.											
Moderate – These species have substantial and apparent—but generally not severe—ecological impacts on physical processes, plant and animal communities, and vegetation structure. Their reproductive biology and other attributes are conducive to moderate to high rates of dispersal, though establishment is generally dependent upon ecological disturbance. Ecological amplitude and distribution may range from limited to widespread.											
Limited – These species are invasive but their ecological impacts are minor on a statewide level or there was not enough information to justify a higher score. Their reproductive biology and other attributes result in low to moderate rates of invasiveness. Ecological amplitude and distribution are generally limited, but these species may be locally persistent and problematic.											
Eval No List -- Some plants were categorized as Evaluated But Not Listed because either Cal-IPC lacked sufficient information to assign a rating or the available information indicated that the species does not have significant impacts at the present time.											
Nominated Not Reviewed -- Some species were nominated for review, but were not evaluated because either they are not known to escape into wildlands or Cal-IPC lacked sufficient information to complete an assessment.											
VAR – Various ranking based on species observed. * Alert status in 2006 Inventory.											

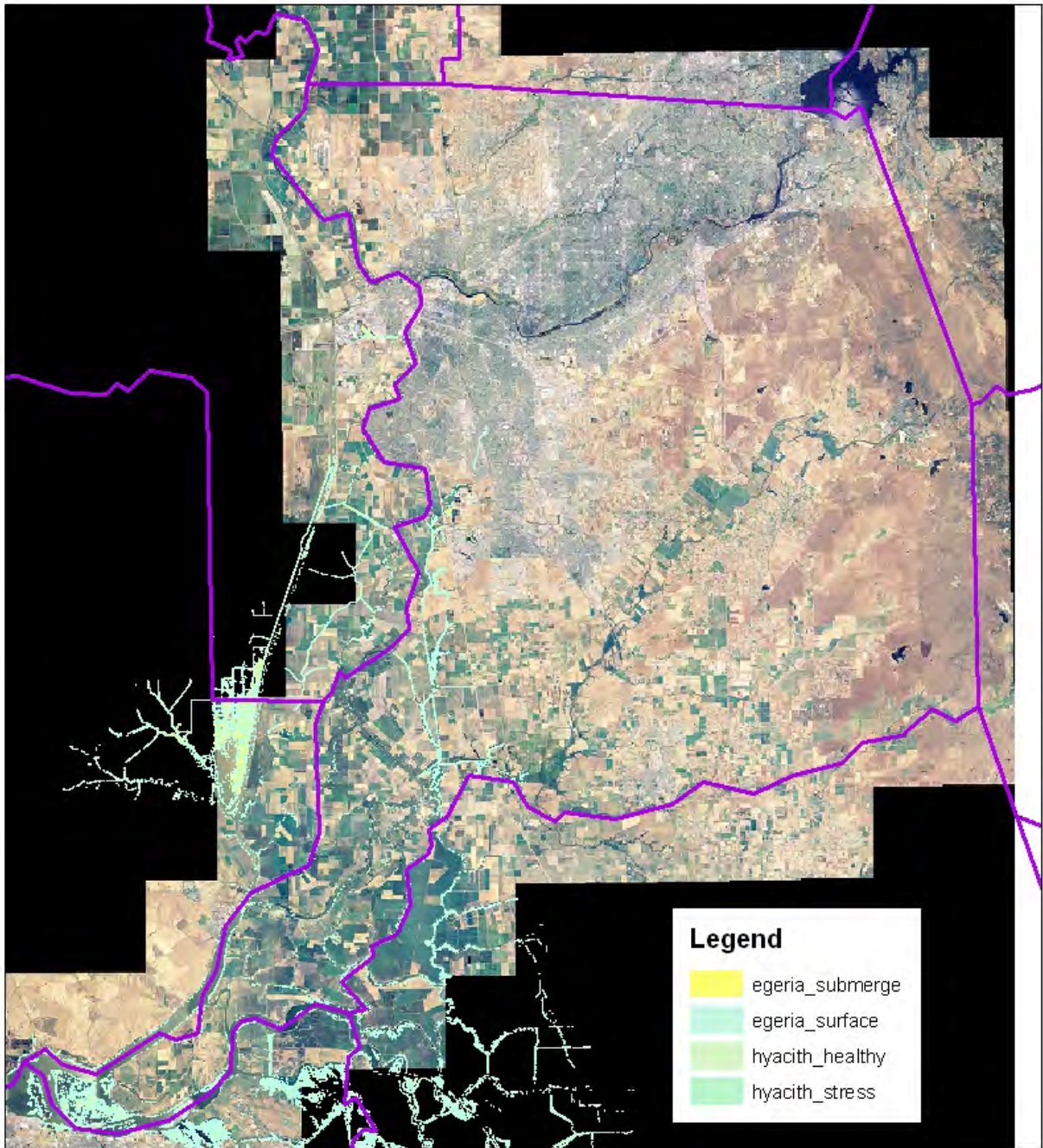
Appendix B
Weed Distribution Information Gathered for Sacramento County

Starting in October 2008, weed mapping data sets for Sacramento County were gathered from the groups listed below. The format of the data received is also listed. Figures showing the data received electronically, and paper maps received from California State Parks, follow the table.

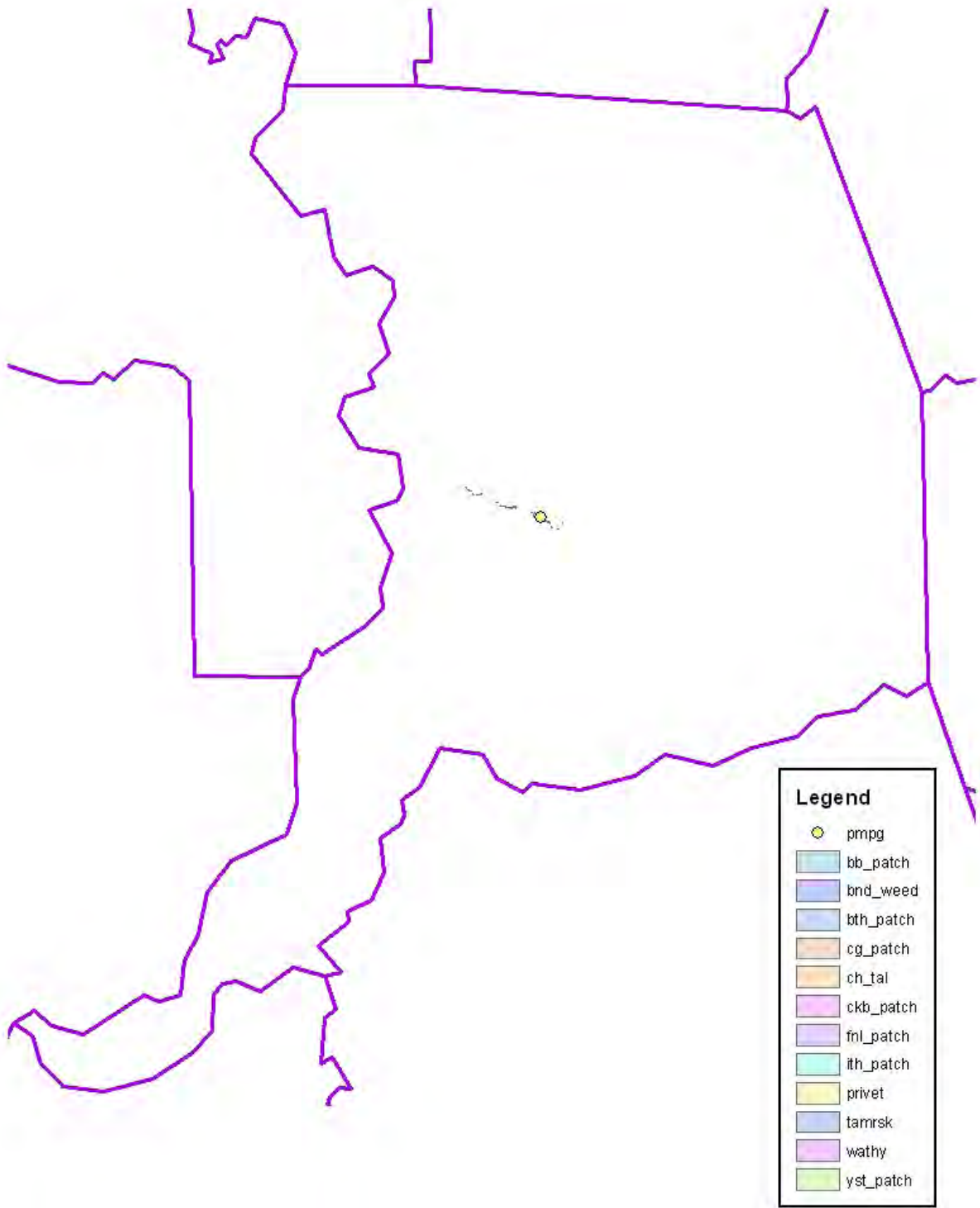
Organization	Data Received	Data Format
California Department of Fish and Game (CDFG)	Delta Vegetation Maps	Electronic shapefiles
CDFG	Boating and Waterways maps	Electronic shapefiles
California Department of Food and Agriculture (CDFA)	A-Rated Weeds	One electronic point
CDFA	Purple Loosestrife	Three electronic points
CDFA	Japanese Dodder locations	Electronic points
California Native Plant Society and Sacramento Weed Warriors	Robla Creek	Verbal information
California Native Plant Society and Sacramento Weed Warriors	Laguna Creek	Electronic shapefiles
California State Parks, Goldfields District	Weed locations on some lands managed by the District	Paper maps
Jones and Stokes Associates	Arcade Creek	Report with list of priority weeds
Sacramento County Parks Department	American River Parkway weed data layer	Electronic shapefiles
Sacramento Area Flood Control Agency	Dry Creek sesbania	Electronic shapefiles
Sacramento Valley Conservancy	Telephone conversation discussion weeds of concern	Verbal information
The Nature Conservancy, Cosumnes River Preserve	Information from Weed Management Plan	List of weeds of concern
United States Fish and Wildlife Service, Stone Lakes National Wildlife Refuge	Telephone conversation discussion weeds of concern	Verbal information



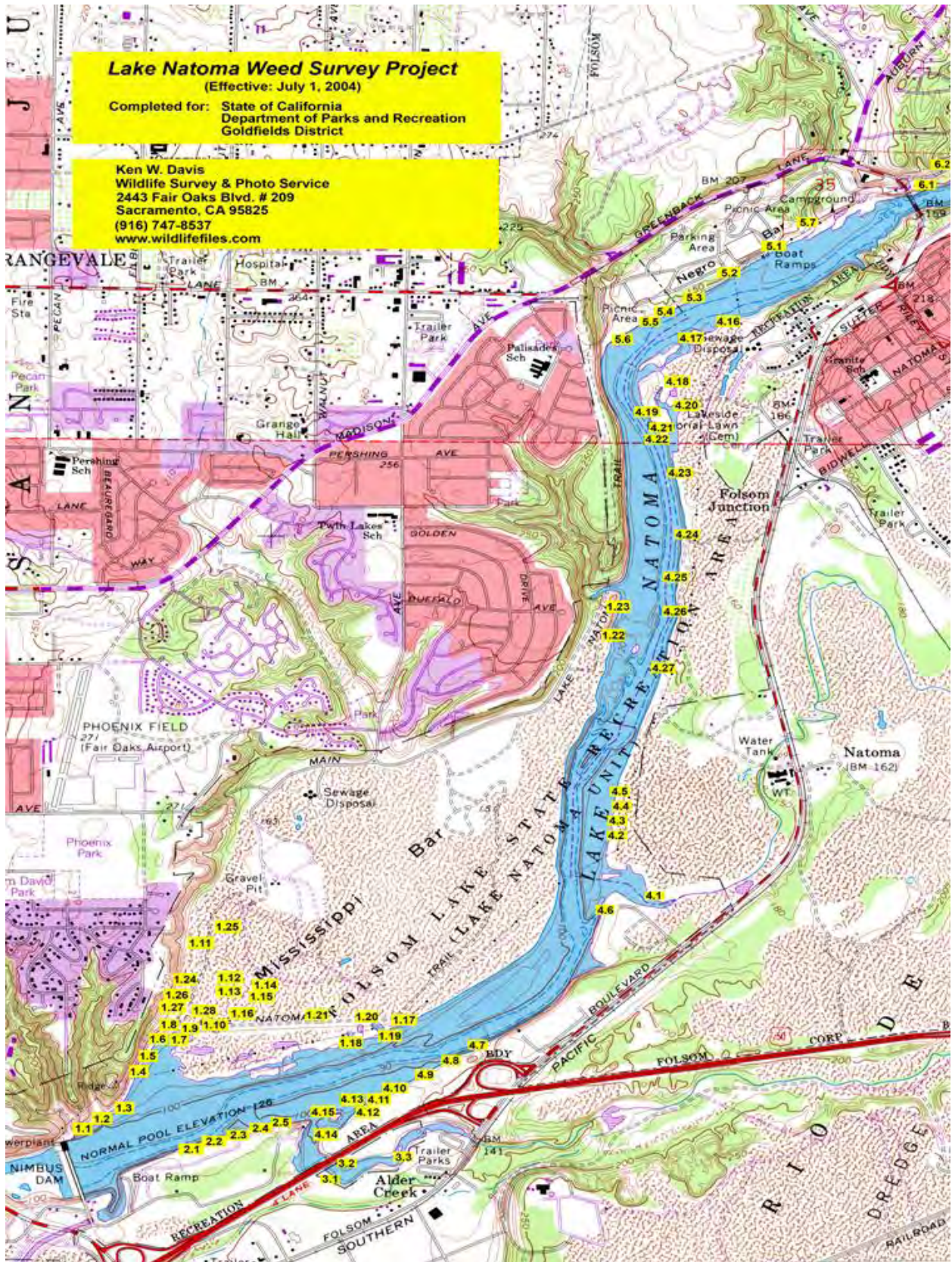
Delta Vegetation Distribution Map (includes some weeds in attribute table), 2008



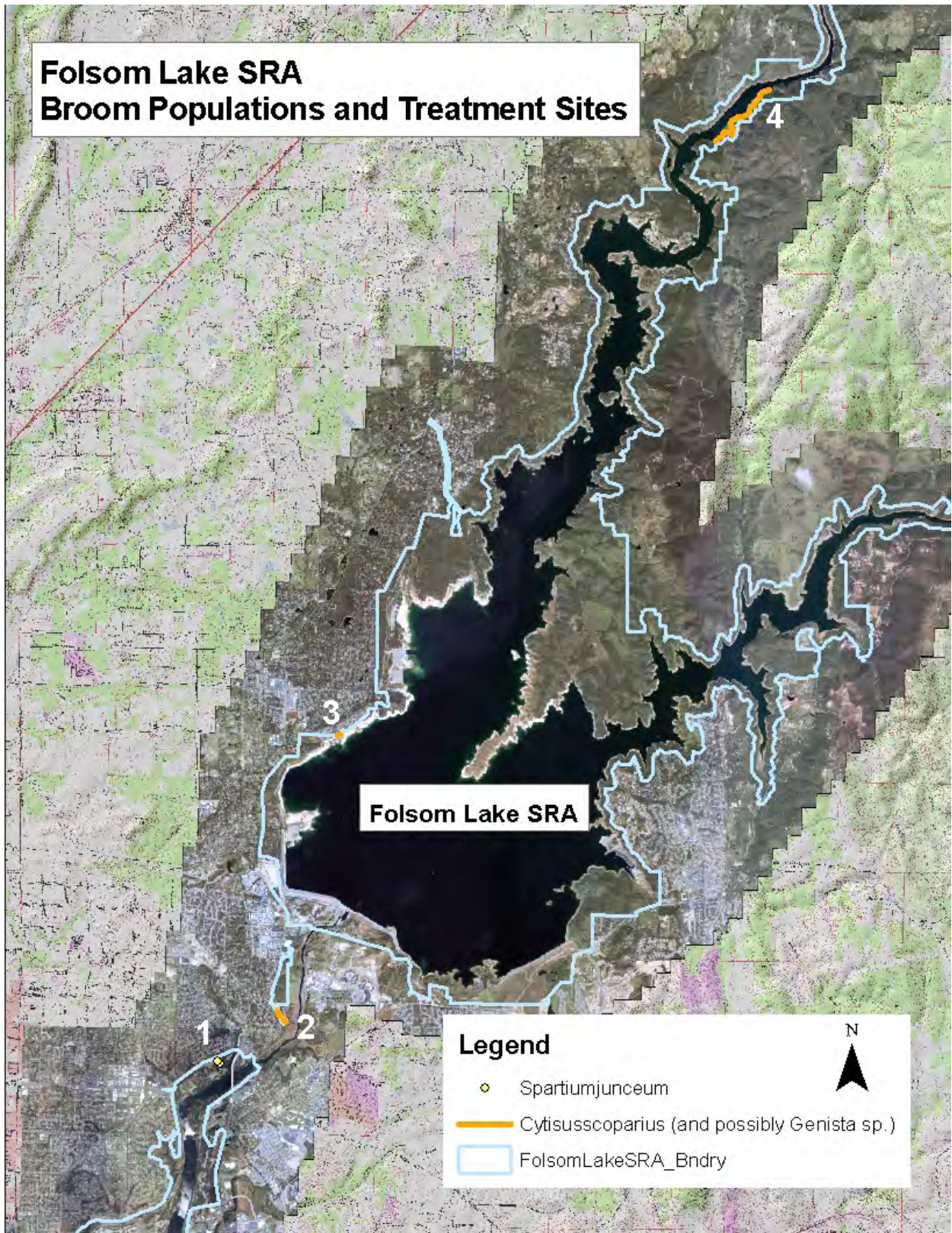
Boating and Waterways Weed Distribution Map, 2008



Laguna Creek Weed Distribution, 2008

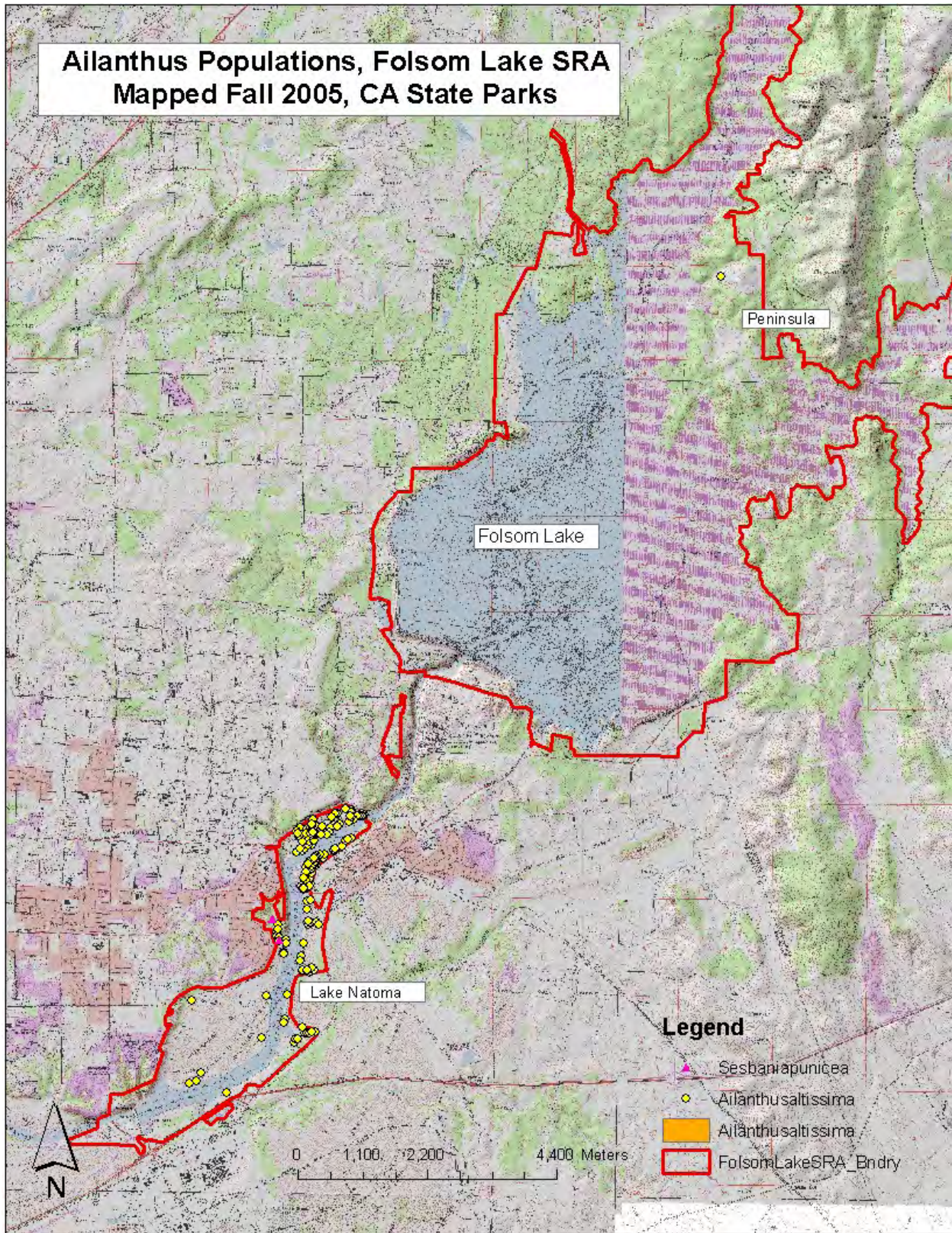


Folsom Lake SRA Broom Populations and Treatment Sites

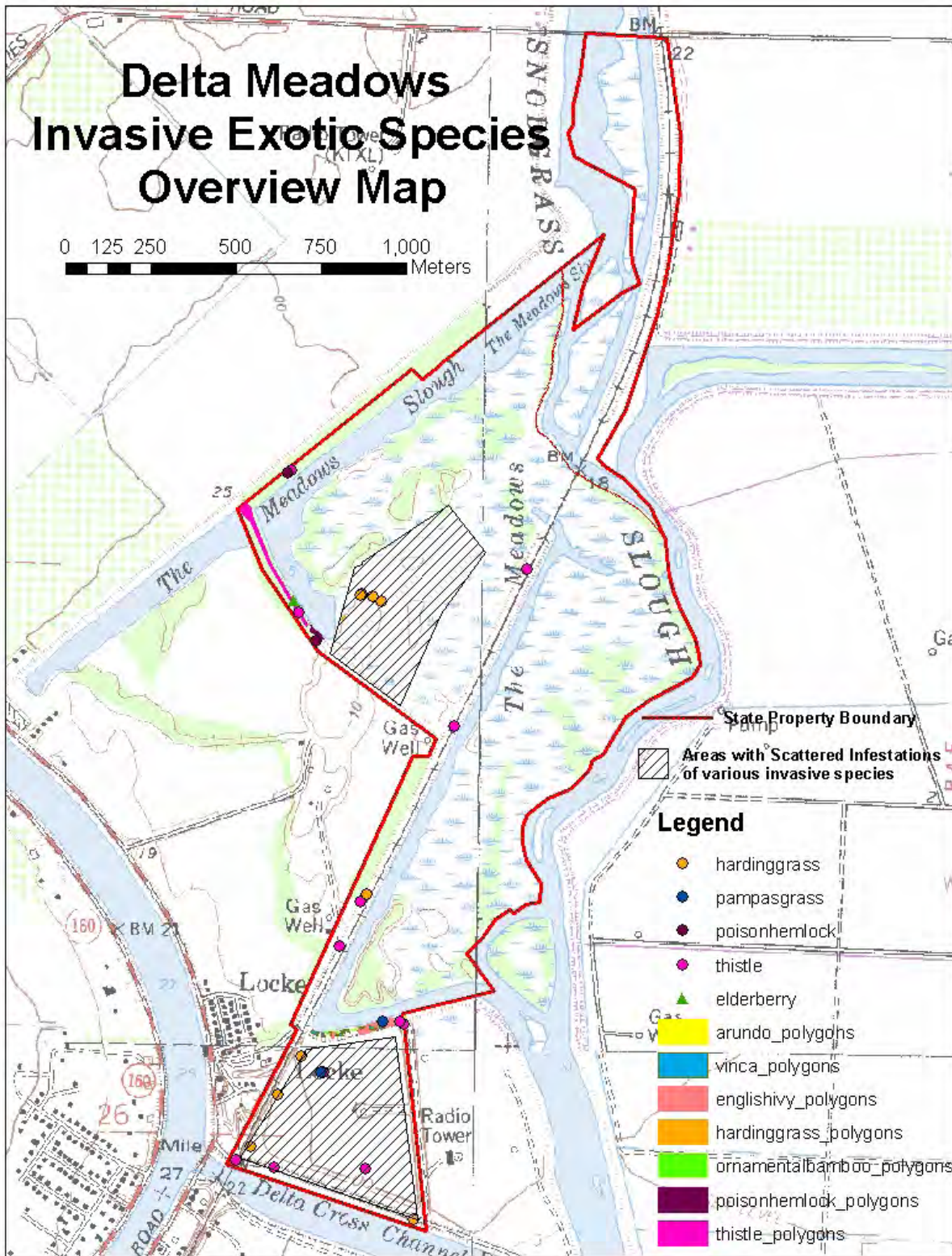


California State Parks Information

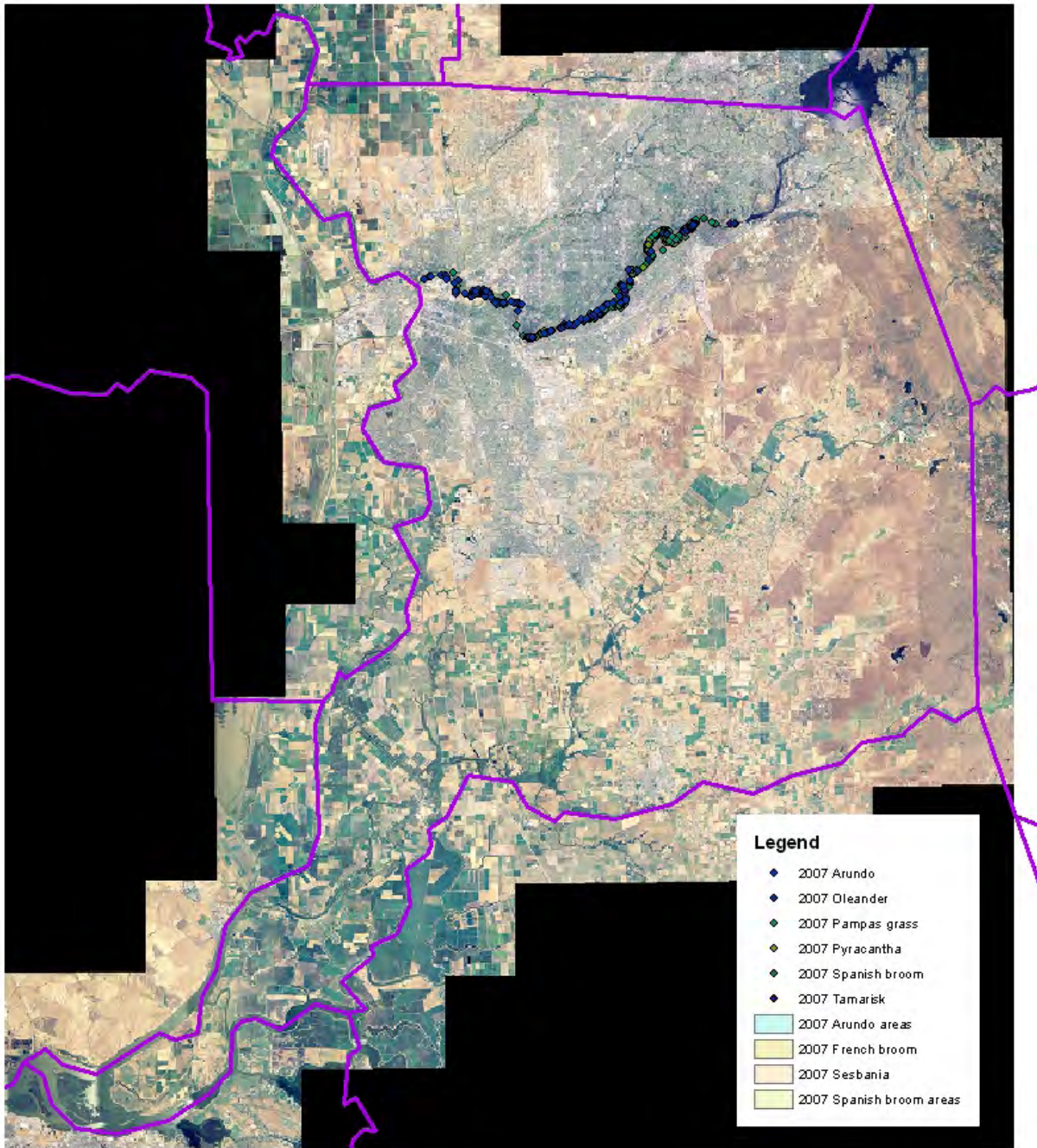
**Ailanthus Populations, Folsom Lake SRA
Mapped Fall 2005, CA State Parks**



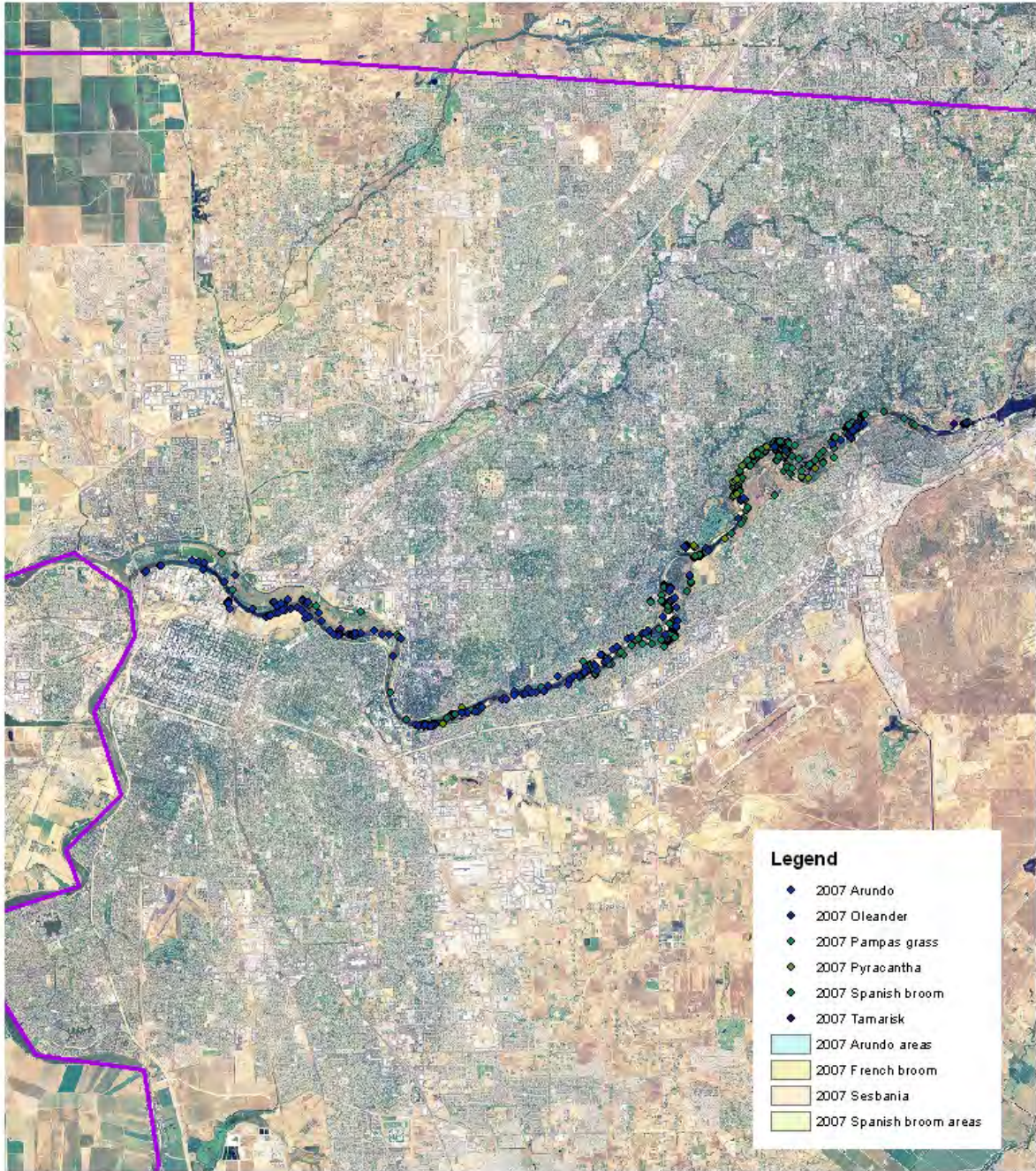
California State Parks Information



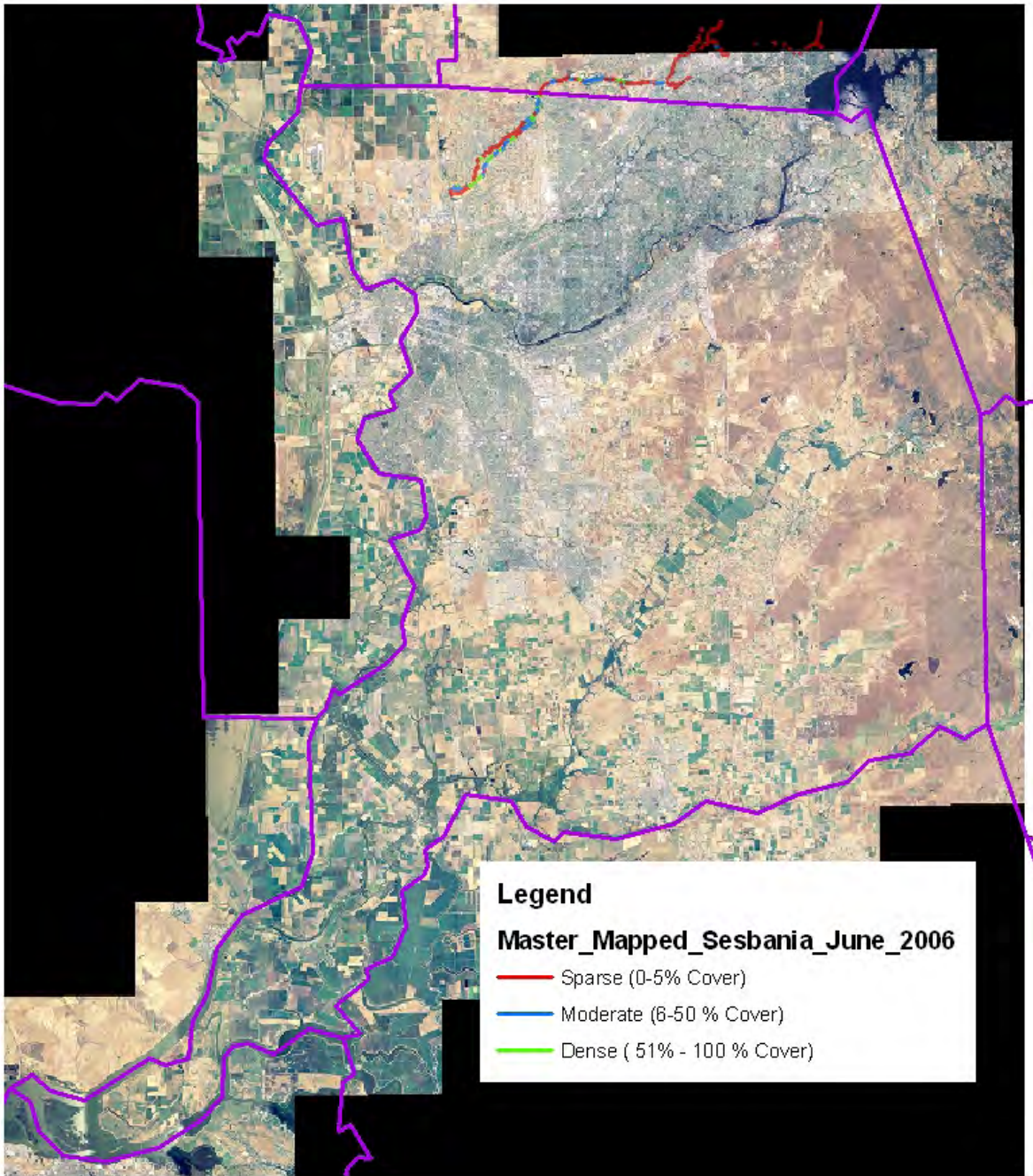




American River Parkway Weed Distribution, 2007



American River Parkway Weed Distribution Close-Up, 2007



Dry Creek Red Sesbania Distribution, 2006

**Appendix C. Invasive Plants Occurring in Sacramento
County Ranked as HIGH by Cal-IPC**

Scientific Name	Common Name
<i>Aegilops triuncialis</i>	Barbed goatgrass
<i>Arundo donax</i>	Giant reed
<i>Bromus madritensis</i> ssp. <i>rubens</i>	Red brome
<i>Bromus tectorum</i>	Cheat grass
<i>Centaurea maculosa</i>	Spotted knapweed
<i>Centaurea solstitialis</i>	Yellow starthistle
<i>Cuscuta japonica</i>	Japanese dodder
<i>Egeria densa</i>	Brazilian waterweed
<i>Eichhornia crassipes</i>	Water hyacinth
<i>Foeniculum vulgare</i>	Fennel
<i>Hydrilla verticillata</i>	Hydrilla
<i>Lepidium latifolium</i>	Perennial pepperweed
<i>Ludwigia peploides</i> ssp. <i>montevidensis</i>	Yellow water primrose
<i>Myriophyllum aquaticum</i>	Parrot feather watermilfoil
<i>Myriophyllum spicatum</i>	Eurasian watermilfoil
<i>Onopordum acanthium</i>	Scotch thistle
<i>Rubus armeniacus</i> (<i>discolor</i>)	Himalaya blackberry
<i>Sesbania punicea</i>	Red sesbania
<i>Taeniatherum caput-medusae</i>	Medusahead
<i>Tamarix parviflora</i>	Tamarisk
Note: Based on a query of the Calflora database (calflora.org).	

**Appendix D. Sacramento Regional WMA Meeting Attendees
November 4, 2009**

First Name	Last Name	Organization
Carrie	Bassett	Amador County Agriculture Department
Denali	Beard	California State Parks
Peter	Beesley	PG&E
Robert	Blumenthal	Alameda County Agriculture Department
Katherine	Blyleven	Lake County Agriculture Department
Michael	Bower	Sycamore Environmental Consultants
Dennis	Bray	Alameda County Agriculture Department
Robin	Breckenridge	CDFA
Eva	Butler	Sac Splash
Chelsea	Carey	UC Merced
Frank	Carl	Sacramento County Agriculture Department
Marian	Chambers	Tuolumne County Agriculture Department
Christiana	Conser	Sustainable Conservation
Betty	Cooper	Sacramento County Regional Parks
Lizette	Crosbie	Sacramento Area Flood Control Agency
Gina	Darin	Department of Water Resources
Morgan	Doran	UC Cooperative Extension
Katie	Filippini	CDFA
Mark	Frizzell	SMUD
Michael	Fry	PG&E
Robert	Hill	Butte County Agriculture Department
Josh	Huntsinger	Placer County Agriculture Department
Janet	Jessen	Solano County Agriculture Department
Doug	Johnson	Cal IPC
Joanne	Karlton	California State Parks
Dean	Kelch	CDFA
Ed	King	Nevada County Agriculture Department
Larry	Lloyd	Yuba/Sutter WMA
Terrance	Lorick	CDFA
Gene	Mangini	Contra Costa County Agriculture Department
Laura	McCready	Sacramento County Agriculture Department
LeeAnne	Mila	El Dorado County Agriculture Department
Jean	Miller	Glenn County Agriculture Department
Tom	Moss	Colusa County Agriculture Department
Brad	Norton	ICF Jones & Stokes
Ramona	Robison	Calbotany and ICF Jones & Stokes
Kevin	Roush	Yuba County Agriculture Department
Ramona	Saunders	Sacramento County Agriculture Department
Chuck	Schafer	Calaveras County Agriculture Department
KC	Sorgen	Sacramento Area Flood Control Agency
Elpidio	Tijerino	Yolo County Agriculture Department
Beatrix	Treiterer	Stone Lakes Wildlife Refuge
George	Waegell	Sacramento County rancher
Frank	Wallace	Sacramento Weed Warriors
Brian	Walsh	Sacramento County TRD
Andrea	Williams	Bay Area Early Detection Network
Dale	Woods	CDFA
Kevin	Wright	Calaveras County Agriculture Department
Andreana	Yribe	CDFA

Appendix D. Summary of Sacramento Regional Weed Management Area (WMA) Meeting November 4, 2009 (prepared by Gina Darin)

Intro/Welcome – Frank Carl, Sacramento County Agricultural Commissioner

- Happy to see folks at the meeting
- Congratulated everyone on being the local contingent of a nation-wide effort to address the invasive species issue.

Invasive Species Council of California – Terrance Lorick, CDFA & Doug Johnson, Cal-IPC

- Updated everyone on the new Invasive Species Council of California. This council is a formalization of a relationship between 6 agencies on this issue. They will take on a coordinated approach to addressing invasive species of all taxa in California.
- Committee: Cal. Invasive Species Advisory Committee will advise the council
- Website: www.iscc.ca.gov
- The Council plans to:
 - o Create a list of invasive species likely to invade California within the next 6 months
 - o Develop a notification system for/to agencies of new invasive species
 - o Perform education and outreach on the issue.
 - o Develop an action plan for all likely invasive species within the next 12 months.
 - o Administer a Trust Fund – details on this were sparse.

Funding under Federal Stimulus (ARRA) – Terrance Lorick, CDFA

- Goal = create and retain jobs
- Fraud training will be required to ensure money is spent on appropriate activities

Cal-IPC Report on New Projects – Doug Johnson, Cal-IPC (www.cal-ipc.org)

Bay Area Early Detection Network (BAEDN) – Andrea Williams, Marin Municipal Water District

- BAEDN is a new program for the early detection and rapid response of invasive plants in the Bay Area.
- They have developed an early detection protocol, an online reporting database, and will hold a conference in February of 2011.
- Website: www.baedn.org

Summary of Valley WMA Activities – Mona Robison, Sacramento WMA

- PowerPoint available

WMA Short Talks

- Sacramento Weed Warriors, Frank Wallace
- Sacramento County, Eva Butler
 - o Stinkwort
- Nevada Placer WMA, Josh Huntsinger, Placer Co.
 - o YST leading edge
 - o Musk thistle in Nevada Co.
- Yuba Sutter WMA, Larry, Sutter Co.
 - o Arundo in northern Sutter Co.
 - o Hydrilla in eastern Yuba Co.
- Glenn Colusa Tehama WMA, Jean Miller, Glenn Co.
 - o CDFA mini-research grant to study fertilization to grow natives to better compete with weeds. Counterpart study in San Joaquin Co.
 - o Arundo on private property

- o RAC \$\$\$ for weeds – plumeless thistle, none found for 5 years, firebreak was built, found plumeless again
- Alpine & El Dorado WMAs, LeeAnne Mila
 - o Musk thistle on USFS land
 - o Stinkwort along roads
 - o Oblong spurge
 - o Pilot weed-free gravel program
- Alameda Contra Costa WMA, Bob, Alameda Co. & Pete
 - o Success story: Late 1960s ID golden thistle (CDFA A-rated), treated chemically every year, last 2-3 years no germination
 - o 40+ Japanese dodder sites
- Calaveras Tuolumne WMA, Marian Chambers, Tuolumne Co.
 - o Treat Canada thistle
 - o Mini-grant to maintain 2 fuel breaks of YST
 - o Cost-share YST program
- Calaveras Tuolumne WMA, Ken, Calaveras Co.
 - o Gorse patch
 - o Mini-grant to ID landowners on YST leading edge
 - o Skeleton weed and SPK spray program.

Other Partner updates

- PG&E, Peter Beesley
 - o Comprehensive weed management program
 - o Wants to be included on MOU and be involved in WMAs
 - o PG&E has charitable giving program (supports PlantRight and Cal-IPC symposium)

Research on Targeted Grazing for Weed Management – Morgan Doran, UCCE

- PowerPoint available

News on Biological Control Projects of Interest to Central Valley WMAs – Dale Woods, CDFA

- PowerPoint available

Report on Continuing Work with the Horticulture Industry and the PlantRight Campaign – Christiana Conser, Sustainable Conservation

- PowerPoint available

Open Forum for Valley WMAs

- Send Santa Clara stinkwort brochure and effective property access letter to WMAs
- How better deal with CalTrans, particularly in regard to stinkwort?
 - o Contact Caltrans County PCA

Appendix E. Mines in Sacramento County Based on 2006 Department of Mines and Geology Database Request

Mine ID	Mine Name	Mine Status	Operator	Operator Address	City	State	Zip	Longitude	Latitude	Commodities	Type of Mining Operation	Disturbed Acreage
91-34-0044	AEROJET MINING SITE	ACTIVE	TEICHERT AGGREGATES	3417 GRANTLINE ROAD, PO BOX 981	FOLSOM	CA	95763	-121.2083	38.5833	SAND AND GRAVEL, SILVER, GOLD (PLACER)	TAILINGS PROCESSING	204
91-34-0047	GRANTLINE WEST	ACTIVE	TEICHERT AGGREGATES	3417 GRANTLINE ROAD/P.O. BOX 981	FOLSOM	CA	95763	-121.2467	38.5811	SAND AND GRAVEL, SILVER, GOLD (PLACER)	TAILINGS PROCESSING	44
91-34-0019	URRUTIA	IDLE	GARDEN LAND SAND	599 GARDEN HIGHWAY	SACRAMENTO	CA	95833	-121.4839	38.605	SAND AND GRAVEL, FILL DIRT	DREDGE	0
91-34-0021	PERKINS	ACTIVE	GRANITE CONSTRUCTION COMPANY	PO BOX 15287	SACRAMENTO	CA	95851	-121.4044	38.5422	SAND AND GRAVEL		102
91-34-0001	VAN VLECK RANCHO SAND & GRAVEL	ACTIVE	VAN VLECK RANCHING & RESOURCES	7879 VAN VLECK ROAD	RANCHO MURIETA	CA	95683	-121.065	38.4781	SAND AND GRAVEL	TAILINGS PROCESSING	18
91-34-0003	VAN VLECK RANCH PIT	ACTIVE	GLADDING, MC BEAN & CO.	601 7TH STREET	LINCOLN	CA	95648	-121.065	38.47	CLAY	OPEN PIT	7
91-34-0004	VAN VLECK-LOWER BRADFORD	ACTIVE	VAN VLECK RANCHING & RESOURCES	7879 VAN VLECK ROAD	RANCHO MURIETA	CA	95683	-121.0519	38.4719	CLAY	OPEN PIT	5.5
91-34-0005	MCDONELL CLAY PIT	ACTIVE	INDUSTRIAL MINERALS COMPANY	16334 PONY BROWN ROAD	SLOUGHHOUSE	CA	95683	-121.0289	38.4581	CLAY	OPEN PIT	1
91-34-0006	TEICHERT - PERKINS PLANT	ACTIVE	TEICHERT AGGREGATES	8760 KIEFER BOULEVARD	SACRAMENTO	CA	95826-3908	-121.3781	38.5439	SAND AND GRAVEL, SILVER, GOLD (PLACER)	PLANT OR MILL	200
91-34-0008	TEICHERT-ASPEN IV	ACTIVE	TEICHERT AGGREGATES	8760 KIEFER BOULEVARD	SACRAMENTO	CA	95826-3908	-121.3481	38.5361	SAND AND GRAVEL, SILVER, GOLD (PLACER)	OPEN PIT	121
91-34-0009	TEICHERT ASPEN V	CLOSED NO INTENT TO RESUME	TEICHERT AGGREGATES	8760 KIEFER BOULEVARD	SACRAMENTO	CA	95826-3908	-121.325	38.5369	SAND AND GRAVEL, SILVER, GOLD (PLACER)	OPEN PIT	22
91-34-0023	CLARK SITE / GRANTLINE	ACTIVE	TEICHERT AGGREGATES	3417 GRANTLINE ROAD/P.O. BOX 981	FOLSOM	CA	95763	-121.195	38.5881	SAND AND GRAVEL	TAILINGS PROCESSING	173

Appendix E. Mines in Sacramento County Based on 2006 Department of Mines and Geology Database Request

Mine ID	Mine Name	Mine Status	Operator	Operator Address	City	State	Zip	Longitude	Latitude	Commodities	Type of Mining Operation	Disturbed Acreage
91-34-0024	YOST SITE/GRANTLINE	ACTIVE	TEICHERT AGGREGATES	3417 GRANTLINE ROAD/P.O. BOX 981	FOLSOM	CA	95763	-121.1611	38.6069	SAND AND GRAVEL	OPEN PIT, TAILINGS PROCESSING	41.1
91-34-0025	HAPPY LANE	CLOSED NO INTENT TO RESUME	GRANITE CONSTRUCTION COMPANY	PO BOX 15287	SACRAMENTO	CA	95851	-121.3167	38.55	SAND AND GRAVEL	OPEN PIT	0
91-34-0027	FAIRBAIRN SOUTH II	CLOSED NO INTENT TO RESUME	GRANITE CONSTRUCTION COMPANY	PO BOX 15287	SACRAMENTO	CA	95851	-121.325	38.5417	SAND AND GRAVEL	OPEN PIT	0
91-34-0028	ASPEN 5A	CLOSED NO INTENT TO RESUME	TEICHERT AGGREGATES	8760 KIEFER BOULEVARD	SACRAMENTO	CA	95826-3908	-121.33	38.5394	SAND AND GRAVEL, SILVER, GOLD (PLACER)	OPEN PIT	0
91-34-0030	SAFCA BORROW SITE 2L	ACTIVE	SACRAMENTO AREA FLOOD CONTROL AGENCY	1007 7TH STREET, 7TH FLOOR	SACRAMENTO	CA	95814	-121.4803	38.6758	FILL DIRT	OPEN PIT	0
91-34-0033	PILLIKEN RANCH	IDLE	TEICHERT AGGREGATES	8760 KIEFER BOULEVARD	SACRAMENTO	CA	95826-3908	-121.1186	38.4581	SAND AND GRAVEL, SILVER, GOLD (PLACER)	TAILINGS PROCESSING	5
91-34-0034	TEICHERT - ASPEN III SOUTH	ACTIVE	TEICHERT AGGREGATES	8760 KIEFER BOULEVARD	SACRAMENTO	CA	95826-3908	-121.3478	38.5233	SAND AND GRAVEL, SILVER, GOLD (PLACER)	OPEN PIT	69
91-34-0036	GRANITE I	IDLE	GRANITE CONSTRUCTION COMPANY	PO BOX 15287	SACRAMENTO	CA	95851	-121.3083	38.5417	SAND AND GRAVEL	OPEN PIT	3
91-34-0037	TEICHERT-ASPEN VI	ACTIVE	TEICHERT AGGREGATES	8760 KIEFER BOULEVARD	SACRAMENTO	CA	95826-3908	-121.3089	38.5375	SAND AND GRAVEL, SILVER, GOLD (PLACER)	OPEN PIT	363
91-34-0038	SACRAMENTO	ACTIVE	TRIANGLE ROCK PRODUCTS, INC.	11501 FLORIN ROAD	SACRAMENTO	CA	95830	-121.2453	38.5053	SAND AND GRAVEL, GOLD (PLACER)	OPEN PIT, PLANT OR MILL	185.97
91-34-0039	EAST MINING SITE/GRANTLINE	ACTIVE	TEICHERT AGGREGATES	3417 GRANTLINE ROAD/P.O. BOX 981	FOLSOM	CA	95763	-121.1569	38.5819	SAND AND GRAVEL	OPEN PIT	271

Appendix E. Mines in Sacramento County Based on 2006 Department of Mines and Geology Database Request

Mine ID	Mine Name	Mine Status	Operator	Operator Address	City	State	Zip	Longitude	Latitude	Commodities	Type of Mining Operation	Disturbed Acreage
91-34-0040	BEN BROWN PIT	ACTIVE	BEN BROWN RANCHES, INC.	PO BOX 217	PLYMOUTH	CA	95669	-121.0417	38.4375	CLAY	OPEN PIT	1.5
91-34-0042	SCHNEIDER HISTORIC MINE	ACTIVE	HARDESTY SAND & GRAVEL	10176 W STOCKTON BOULEVARD	ELK GROVE	CA	95758	-121.1083	38.4583	SAND AND GRAVEL, STONE, FILL DIRT		22.85
91-34-0043	VINEYARD I	ACTIVE	GRANITE CONSTRUCTION COMPANY	PO BOX 15287	SACRAMENTO	CA	95851	-121.3508	38.5183	SAND AND GRAVEL, SILVER, GOLD (LODE)	OPEN PIT	73
91-34-0045	ASPEN IV SOUTH	NEWLY PERMITTED	TEICHERT AGGREGATES	8760 KIEFER BOULEVARD	SACRAMENTO	CA	95826-3908	-121.3344	38.5114	SAND AND GRAVEL, SILVER, GOLD (PLACER)	OPEN PIT	0
91-34-0046	ASPEN V SOUTH	NEWLY PERMITTED	TEICHERT AGGREGATES	8760 KIEFER BOULEVARD	SACRAMENTO	CA	95826-3908	-121.3333	38.5225	SAND AND GRAVEL, SILVER, GOLD (PLACER)	OPEN PIT	0

Appendix F

Inspection Procedures for Prevention of New Weed Introductions Into Sacramento County

Sacramento County's pest exclusion inspections are in coordination with the efforts of CDFA and the USDA. CDFA personnel inspect loads of agricultural commodities coming into the state at border stations located on 16 major highways entering California. In 2008, more than 22.1 million private vehicles and 7.3 million commercial vehicles were inspected. Loads that are determined to be infested with pests are rejected and prohibited entry into the state. If an inspection is not able to be performed at the border, CDFA notifies the destination county of incoming shipments which may contain weed, insect, or plant pests. HOLD notices are issued to carriers of such diverse commodities as bee colonies, hay, nursery stock and earth moving equipment. A copy of the HOLD notice is also faxed to the destination county. The HOLD notice instructs the driver to deliver the load to the declared address. Upon arrival, the receiver of the shipment must call the county and hold the shipment for inspection. If the county is not notified by the receiver within a reasonable amount of time, the county will follow-up by visiting the declared destination. If a pest is found during the inspection by the county, a sample is sent to the CDFA Diagnostic Lab for an official identification. Based on the rating of the sample, the county inspector may reject the shipment by (1) sending it back out of state OR (2) confiscating and destroying, OR (3) treating or otherwise reconditioning the shipment.

When shipments of grain or seed are found to be infested with weed seed not of common occurrence, such shipments may be allowed to move in quarantine (quarantine tag is affixed to load or manifest) to an approved mill for processing. Sacramento County has four approved mills able to process contaminated hay or grain shipments. These mills are inspected and are approved to grind, heat, or otherwise destroy viability of weed pests in hay or grain.

The County Agriculture Commissioner's Office also inspects incoming parcels at express carriers such as UPS, FedEx, and Ontrak, as well as incoming airfreight at the airport. Packages containing plant material must be marked with the identity of the shipment, the origin, the senders name and address and a receivers name and address. Any packages liable to contain pests are profiled. The packages are opened and examined. If an immediate determination of pest freedom cannot be made, the packages are held. Samples may be submitted to the CDFA Plant Pest Diagnostic Center. ***Aquatic weeds are the most often found plant pests during these inspections. Aquatic weeds may be shipped as nursery stock for the aquarium trade, or may be included as food or an oxygen source for fish in transit.***

Inspectors refer to the CDFA Pest Exclusion Manual regarding weed policy. If a suspect plant is found during inspection, it is sent to the CDFA Plant Pest Diagnostic Center for positive identification. The lab will determine the identity of the plant and assign a rating on the return slip. Plants rated A or Q are immediately confiscated and destroyed (by deep pit burial). B and C rated pests may be allowed to proceed depending on the policy of the destination county. Incoming nursery stock that is itself B or C rated would be rejected. If a B rated weed pest is found infesting an incoming nursery shipment, the shipment will be rejected, reconditioned if possible or destroyed. If the pest is C rated and the rate of infestation is within the standard of cleanliness for nursery stock (a few on a few), the plant shipment may be released.

Inspection of production nurseries is also the task of the County Agriculture Commissioner's Office. Inspectors look for quality of nursery stock, labeling, and freedom of pests. Nursery stock may contain some C rated weeds - but must maintain a minimum standard of cleanliness. B rated weeds found in nursery stock are not allowed. A notice of violation is issued and the nursery must hold that stock off sale until the pest is eradicated. B rated nursery stock is not allowed to be sold by nurseries.

Appendix G
Detailed Results from WMA Prioritization Meeting on August 13, 2009

9 votes

Develop list of prohibited horticultural plants

[Additional action item added during 8/13/09 meeting]

The WMA members were interested in developing a list of prohibited horticultural plants.

8 votes

Develop an outreach and education strategy linked to prevention, exclusion and early detection

[Education: Raising Awareness and Outreach]

7 votes

Develop preliminary EDRR action plan

[Prevention: Early Detection]

Upgrade the available weed data to a more user-friendly format such as Google Earth

[Information Management: Survey, Inventory and Mapping]

Work with grant writer and WMA members to find additional funding sources

[Administration: Background on Funding and Staffing Sources to Implement Priority Projects]

6 votes

Coordinate land management groups to more effectively manage weeds

[Administration: Partnerships, Current and Future Opportunities]

Hold one field meeting per year

[Additional action item added during 8/13/09 meeting]

5 votes

Coordinate efforts with Bay Area Early Detection Network (BAEDN)

[Prevention: Early Detection]

4 votes

Distribute WMA brochures to WMA signatory groups

[Education: Raising Awareness and Outreach]

Prepare updated WMA brochure in English and Spanish

[Education: Raising Awareness and Outreach]

Attend one or more outreach events yearly as a WMA and distribute information

[Education: Raising Awareness and Outreach]

Develop BMPs for different introduction pathways and create handouts or brochures

[Prevention: Exclusion]

Continue to collect weed data sets from WMA members and others

[Information Management: Survey, Inventory and Mapping]

Develop a list of groups which should be involved in the WMA or outreach.

[Administration: Partnerships, Current and Future Opportunities]

Support research on effective restoration techniques

[Projects: Weed Management, Restoration, Monitoring and Research]

3 votes

Encourage WMA member organizations to create unique data sets and store them with other WMA map data.

[Information Management: Survey, Inventory and Mapping]

Encourage the use of sustainable and effective restoration techniques

[Projects: Weed Management, Restoration, Monitoring and Research]

2 votes

Distribute BMP information to groups managing the pathways mentioned above

[Prevention: Exclusion]

Invite County Ag to present about screening procedures in County at WMA meeting

[Prevention: Exclusion]

Create outreach materials for education about EDRR planning

[Prevention: Early Detection]

Support research designed to address weed questions applicable to Sacramento County

[Projects: Weed Management, Restoration, Monitoring and Research]

1 vote

Continue to meet quarterly as a WMA and share information

[Education: Raising Awareness and Outreach]

Survey other WMAs to identify potential funding sources

[Administration: Background on Funding and Staffing Sources to Implement Priority Projects]

No votes or left out of voting

Participate in Cal-IPC speakers bureau (no votes)

[Education: Raising Awareness and Outreach]

Determine primary point of contact for EDRR reporting (no votes)

[Prevention: Early Detection]

Identify grant writers inside and outside Sacramento County government who can work with WMA members (no votes)

[Administration: Background on Funding and Staffing Sources to Implement Priority Projects]

*** Implement an education and outreach plan (no votes* inadvertently left out of voting)**

[Administration: Partnerships, Current and Future Opportunities]